



ALASKA DIVISION OF HOMELAND SECURITY & EMERGENCY MANAGEMENT

SITUATION REPORT 23-096 • APRIL 06, 2023



Toll-Free 1.800.478.2337

Anchorage Area 907.428.7000

SEOC 907.428.7100

SEOC Preparedness Level Level 1 – Routine Operations	http://ready.alaska.gov	National Terrorism Advisory System: Read the NTAS Bulletin here
Maritime Security (MARSEC) Level: 1-Minimum Appropriate Security Measures	WHO Novel Coronavirus Pandemic (COVID-19): 2019 Novel Coronavirus	Alaska Military Installation Force Protection Level: FPCON Bravo

(Significant changes from previous situation reports are red.)

Significant Issues:

Diomedes Power Outage Local Disaster Declaration

The SEOC received a local disaster declaration from the City of Diomedes yesterday. The declaration is for an extended power outage that occurred from March 21-31, 2023. The declaration requests reimbursement for increased fuel costs incurred by individuals, the clinic, the school, and the water treatment plant, as well as reimbursement for sheltering costs at the school. SEOC is reviewing the declaration and working with the community to make sure there are no unmet needs at this time.

State of Alaska Department of Health (DOH)

The DOH is leading the State of Alaska COVID-19 Recovery, supported by the SEOC and other state departments as required.

For current COVID-19 information, see:

<https://covid19.alaska.gov/>

<https://www.cdc.gov/coronavirus/2019-ncov/index.html>

NTAS Bulletin

The U.S. Department of Homeland Security has issued an updated National Terrorism Advisory Bulletin. The updated bulletin can be viewed at the below link.

To read current or expired advisories, click the link below:

<https://www.dhs.gov/national-terrorism-advisory-system>

Travel Alerts and Conditions

For current driving conditions dial 511 or link to <https://511.alaska.gov/>

Barry Arm Landslide / Tsunami Risk

For the latest information on the Barry Arm Landslide and Tsunami risk, click here:

[DGGG Barry Arm Landslide and Tsunami Hazard](#)

Recent Earthquakes

USGS Earthquake Information: <http://earthquake.usgs.gov/>

National Tsunami Warning Center: <http://tsunami.gov/>

Alaska Volcanoes

Great Sitkin Alert Level: **Watch** and Aviation Color Code: **Orange**

Aniakchak Alert Level: **Advisory** and Aviation Color Code: **Yellow**

Semisopchnoi Alert Level: **Watch** and Aviation Color Code: **Orange**

Takawangah Alert Level: **Advisory** and Aviation Color Code: **Yellow**

Tanaga Alert Level: **Advisory** and Aviation Color Code: **Yellow**

Trident Alert Level: **Advisory** and Aviation Color Code: **Yellow**

For Alaska Volcano updates, go to: <https://www.avo.alaska.edu/>

Air Quality Index (AQI) Advisories

For the most up to date Air Quality Index Advisories:

<http://dec.alaska.gov/Applications/Air/airtoolsweb/Home/Index>

Spills of Oil and Hazardous Substances

The ADEC Spill Prevention and Response page is located at:

<http://dec.alaska.gov/spar/ppr/spill-information/response/>

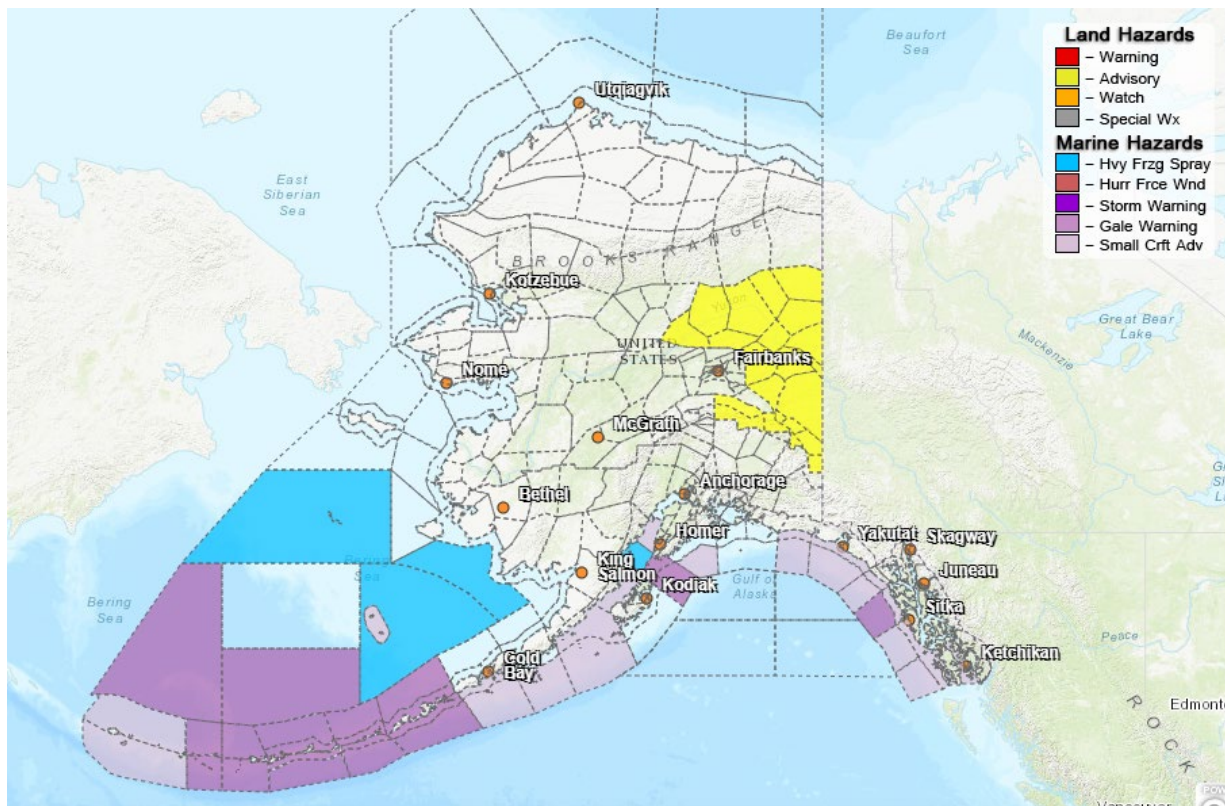
Alaska Cyber Security Information

State Employees may sign up for cyber security notifications and alerts at

<https://oit.alaska.gov/security>

CISA-Cybersecurity Services and Tools: www.cisa.gov/free-cybersecurity-services-and-tools

Significant Weather:

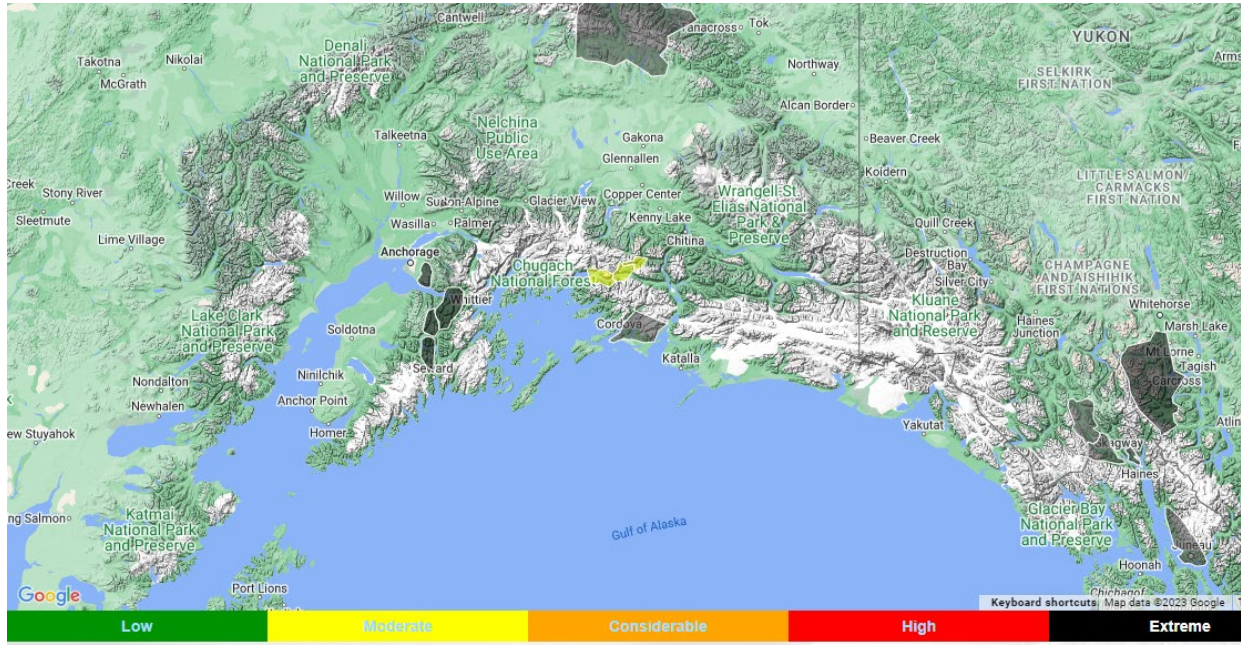


The following Winter Weather Advisories are in effect:

- Eastern Alaska Range – Snow expected with accumulation of 4 to 10 inches mainly south of Black Rapids **through 6:00AM Friday.**
- Upper Tanana Valley and the Fortymile Country – Snow expected with accumulation of 4 to 6 inches **through 6:00AM Friday.**
- Yukon Flats and Surrounding Uplands – Snow expected with total accumulation of 4 to 6 inches **South and East of Eagle through 6:00AM Friday.**

For more information and the most current weather, go to: <http://www.weather.gov/arh>.

Avalanche Forecast:



- Haines – Moderate advisory level above 1,500ft and low advisory level below 1,500ft.
- Valdez – Moderate avalanche advisory level above 3,000 ft and low below 3,000 ft.
- Cordova area: Moderate advisory level above 2,000 ft, low advisory level below 1,000 ft.
- Turnagain Pass – Considerable avalanche advisory above 1,000 ft., Moderate avalanche advisory level below 1,000 ft.
- Hatcher Pass – Avalanche danger is moderate for wet loose avalanches at ALL elevations.

Check the Avalanche Forecast Center closest to your area for the most up to date information on avalanche potential. <https://alaskasnow.org> or <https://www.weather.gov/afc/avalancheweather>

The Next Situation Report: will be **07 April 2023**. A significant change in the situation or the threat level will prompt an interim report. This report is posted on the internet at <https://ready.alaska.gov/sitrep>.

To register for email distribution, go to <http://list.state.ak.us/mailman/listinfo/dhsem.situation.report>. Direct questions regarding this report to the SEOC at 907-428-7100 or seoc@alaska.gov